

Note:

Materials:

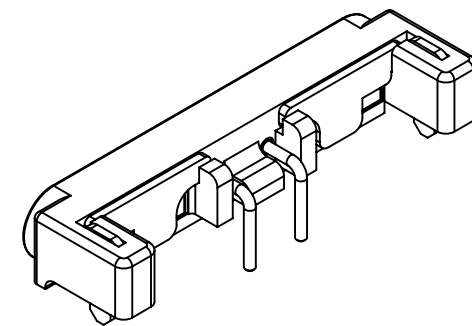
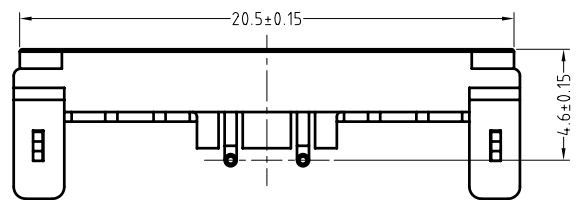
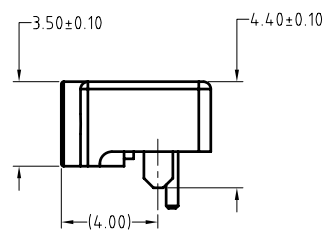
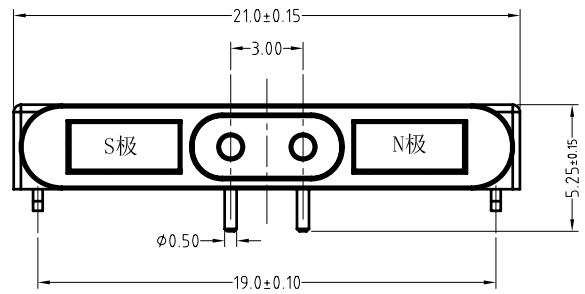
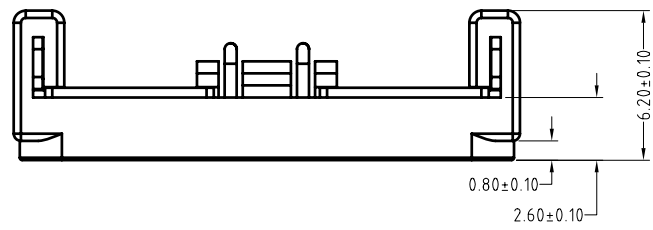
- .Pin: Brass 0.25um Au over Ni
- .Insulator: Black high temperature plastics UL94 V-0
- .Sheet: SPCC Ni
- .Magnet: NdFeB Ni

Electrical:

- .Rated current & voltage: DC 12V; 2A
- .Contact resistance: 50 milliohm Max.

To ensure the best usage, please operate it based on the working height.
Based on the engineering drawings, shall not exceed the maximum allowed compression.

BOM		
Part	NO.	Qty
Pin	B622-W1010	2
Magnet	B241-M1100	1
Magnet	B241-M2100	1
Housing	H300-02H02	1
stamping01	B241-C1100	2
stamping02	B241-C2100	2



Approve Sign

stamping 01

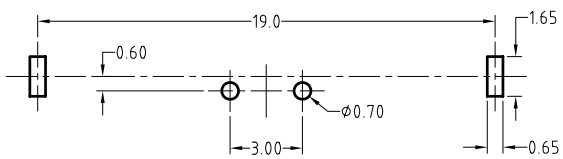
Pin

stamping 02

Magnet B241-M2100

Magnet B241-M1100

Housing



PCB layout

SCALE	10:1	UNIT:mm	THIS DOCUMENT IS THE SOLE PROPERTY OF CFE CORPORATION CO.,LTD., AND SHOULD NOT BE USED IN WHOLE OR IN PART WITHOUT PRIOR WRITTEN PERMISSION.
ANGEL	±1°	A4	
0~6	±0.05		SHEET: 1 of 1
6~30	±0.10	DRAW	
30~150	±0.15	CHECK	
GENERAL TOLERANCE UNLESS OTHERWISE NOTED		APPRO	



PART NO.	M-BP62221-02300H0B
FILE NAME	BP622XX
TITLE.	Pogo pin connector

ECN(DCN) NO.	REV	DATE	DESCRIPTION
	A0	2016.10.13	NEW