

Note:

Materials:

.Insulator: Black high temperature plastics UL94 V-0

.Pogo pin: Brass 0.125um Au over Ni

.Magnet: NdFeB N50 NI

.Sheet: Specc Ni

.Copper:Brass C3602 Sn (A2)

Mechanical:

.Contact force: 20g±10g at 0.4mm working stroke

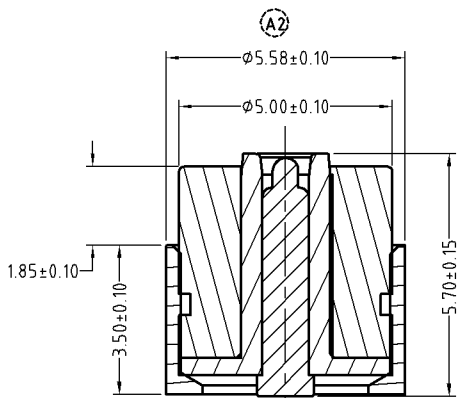
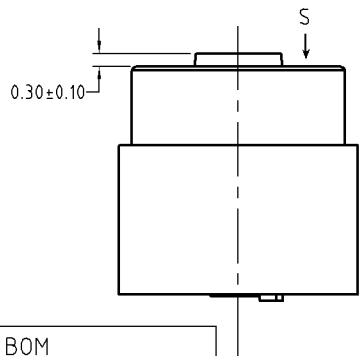
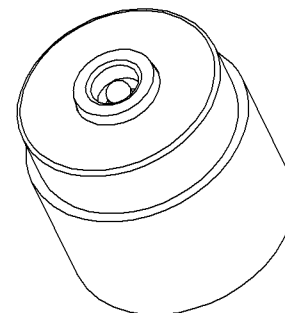
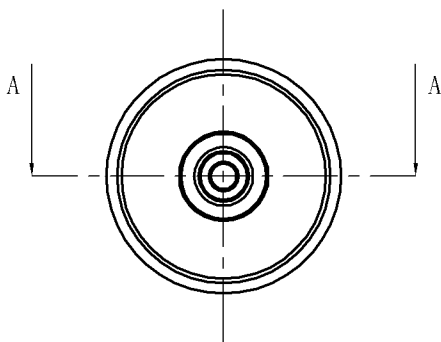
.Life test: 20,000 cycles

Electrical:

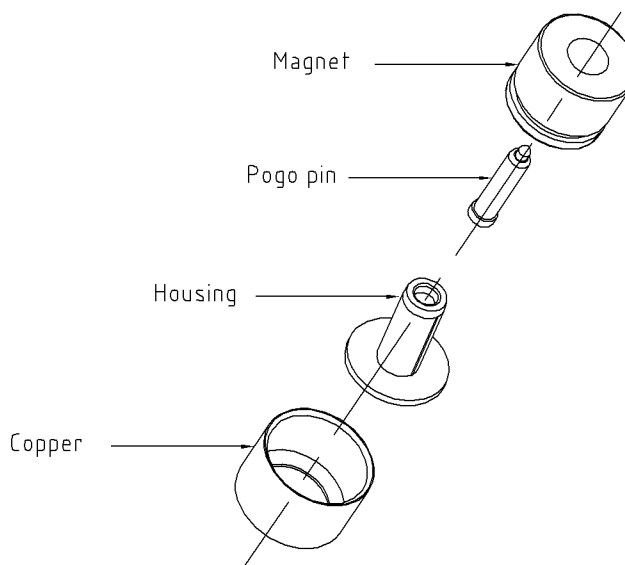
.Rated current & voltage: DC 12V; 1A

.Contact resistance: 50 milliohm Max.

To ensure the best usage, please operate it based on the working height.
Based on the engineering drawings, shall not exceed the maximum allowed compression.



剖面 A-A



BOM		
Part	NO.	Qty
Housing	01000-H06	1
Pogo pin	BP17911	1
Magnet	B179-E8100	1
copper	B502-C1100	1

ECN(DCN) NO.	REV	DATE	DESCRIPTION
	A2	2016.08.26	修改表面处理方式及尺寸
	A1	2016.05.19	修改材质
	A0	2016.03.15	NEW

SCALE	10:1	UNIT:mm	THIS DOCUMENT IS THE SOLE PROPERTY OF CFE CORPORATION CO.,LTD., AND SHOULD NOT BE USED IN WHOLE OR IN PART WITHOUT PRIOR WRITTEN PERMISSION.	
ANGEL	±1°	A4	SHEET: 1 of 1	
0~6	±0.05		PART NO.	M-BP50291-01000H0A
6~30	±0.10	DRAW	FILE NAME	BP502XX
30~150	±0.15	CHECK	TITLE.	Pogo pin connector
GENERAL TOLERANCE UNLESS OTHERWISE NOTED		APPRO		

