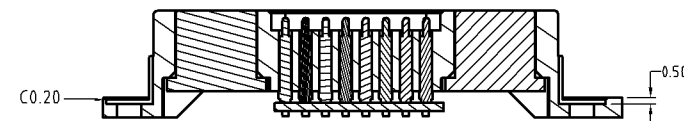
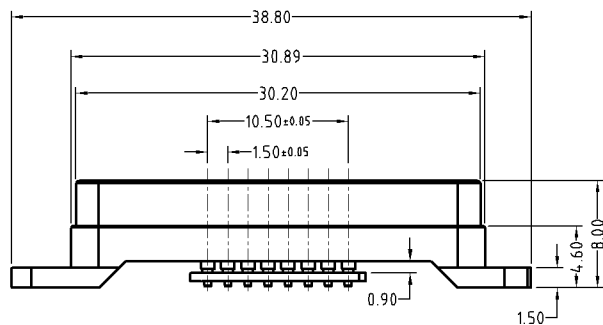
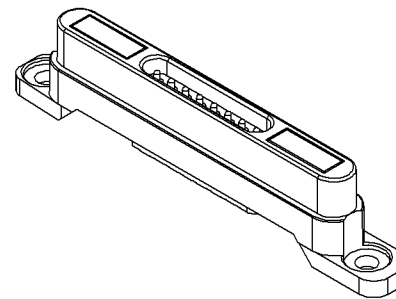
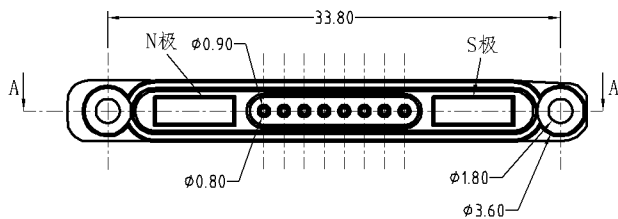


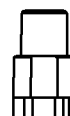
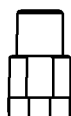
Note:
 Materials:
 .Insulator: Black high temperature plastics UI94 V-0
 .Plunger & Plug: Brass 0.25um Au over Ni
 Barrel: Brass 0.25um Au over Ni
 Spring: SUS Au
 Mechanical:
 .Contact force: 50g±20g at 0.7mm working stroke
 .Life test: 100,000 cycles
 Electrical:
 .Rated current & voltage: DC 12V; 1A Max.
 .Contact resistance: 50 milliohm Max.



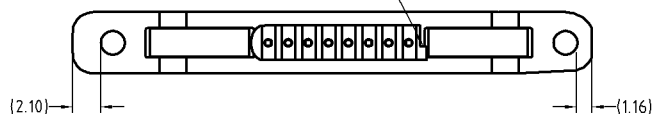
Approve Sign



截面 A-A



PCB缺口位于塑胶缺口近端



| | | | |
|-------------|--|--------------------|-------------|
| 3 | N52 NdFeB Magnet plating Ni-Cu-Ni <N52 钕铁硼磁铁 表面镀镍铜镍> | B647-M2102 | 1 |
| 2 | N52 NdFeB Magnet plating Ni-Cu-Ni <N52 钕铁硼磁铁 表面镀镍铜镍> | B647-M1101 | 1 |
| 1 | Pogo pin plating 0.25um Au+Housing+PCB <弹簧针 电镀金0.25um 装入胶芯 焊接PCB> | M-BP64712-08150H0C | 1 |
| 序号 <NO.> | 规格 <Specification> | 料号 <P/N> | 数量 <Qty> |

| | | | | | |
|--|-------|---------|--|--|-----------------------------|
| SCALE | 10:1 | UNIT:mm | THIS DOCUMENT IS THE SOLE PROPERTY OF CFE CORPORATION CO.,LTD., AND SHOULD NOT BE USED IN WHOLE OR IN PART WITHOUT PRIOR WRITTEN PERMISSION. | CFE 东莞市川富电子有限公司 CFE CORPORATION CO.,LTD. | |
| ANGEL | ±2° | A4 | | | |
| 0~6 | ±0.10 | | | | SHEET: 1 of 1 |
| 6~30 | ±0.20 | DRAW | | | PART NO. M-BP64711-08150H0F |
| 30~150 | ±0.30 | CHECK | FILE NAME BP647XX | TITLE. Pogo pin Connector | |
| GENERAL TOLERANCE UNLESS OTHERWISE NOTED | | APPRO | | | |

| | | | |
|--------------|-----|------------|--------------|
| | T1 | 2016.07.21 | SMT方式换为DTP方式 |
| | A0 | 2016.07.19 | NEW |
| ECN(DCN) NO. | REV | DATE | DESCRIPTION |