

Note:<注意>

Mechanical:<机械性能>

.Contact force: 20g±15g at 0.6mm working stroke

<接触弹力: 20g±15g在0.6mm的工作行程>

.Full stroke:1.40mm

<最大行程: 1.40mm>

Electrical:<电气性能>

.Rated current & voltage: DC 12V, 1A

<额定电压, 电流: DC 12V, 1A>

.Contact resistance: 50 milliohm Max.

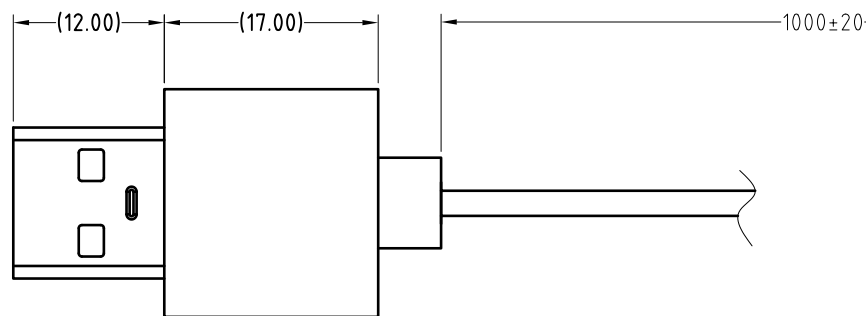
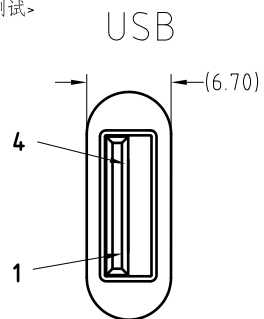
<接触阻抗: 50 milliohm Max.>

100% open & short test.

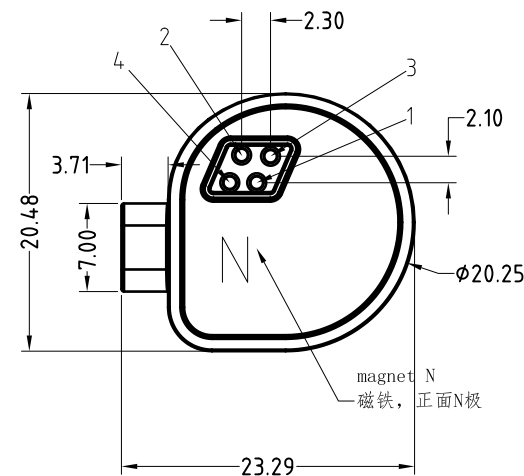
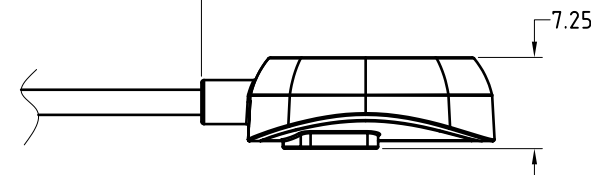
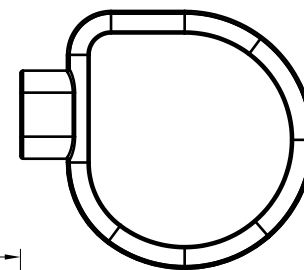
<100%导通,短路测试>



Approve Sign



Pogo pin conn



USB→Pogo pin conn		
1	Vcc	1
2	D-	2
3	D+	3
4	GND	4

SCALE	10:1	UNIT:mm	THIS DOCUMENT IS THE SOLE PROPERTY OF CFE CORPORATION CO.,LTD., AND SHOULD NOT BE USED IN WHOLE OR IN PART WITHOUT PRIOR WRITTEN PERMISSION.	东莞市川富电子有限公司 CFE CORPORATION CO.,LTD.	
ANGEL	±1°	A4	SHEET: 1 of 1		
0~6	±0.10			PART NO.	CM-BP4:1211-04210H0C
6~30	±0.15	DRAW		FILE NAME	BP4:12XX
30~150	±0.20	CHECK		TITLE.	Magnetic Cable connector
GENERAL TOLERANCE UNLESS OTHERWISE NOTED			APPRO		

ECN(DCN) NO.	REV	DATE	DESCRIPTION
	A4	2015.10.13	线材材质由TPE变为PVC, 弹簧针尺寸变更(修改BOM表)