

Note:<注意>

Mechanical:<机械性能>

.Contact force:40g±20g at 0.6mm working stroke

<接触弹力: 40g±20g在0.6mm的工作行程>

.Life test: 20,000 cycles

<寿命: 20000次>

Electrical:<电气性能>

.Rated current & voltage: DC 12V, 1A

<额定电压, 电流: DC 12V, 1A>

.Contact resistance: 50 milliohm Max.

<接触阻抗: 50 milliohm Max.>

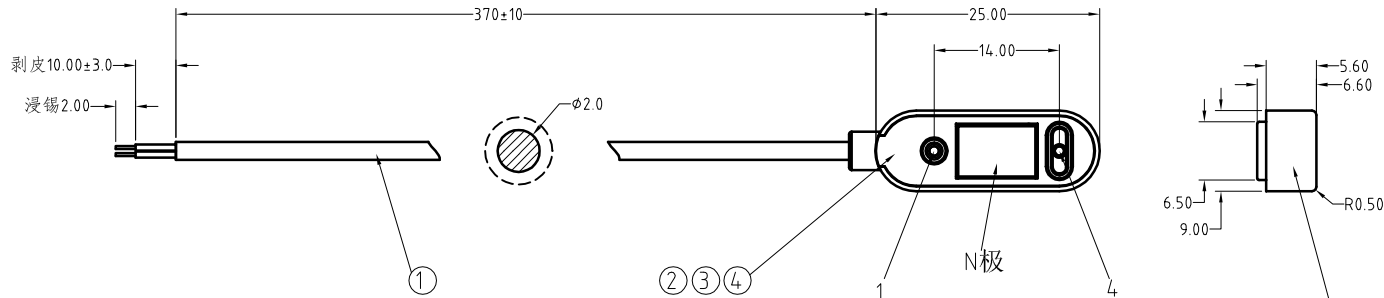
100% open & short test.

<100%导通,短路测试>



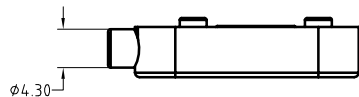
Approve Sign

CONN



N Docking magnet force 150-300g.
(N极 对接端吸附力为150-300g)

增加防短路保护



Wire→CONN
Red_Vcc_1
Black_GND_4

SCALE	10:1	UNIT:mm	THIS DOCUMENT IS THE SOLE PROPERTY OF CFE CORPORATION CO.,LTD., AND SHOULD NOT BE USED IN WHOLE OR IN PART WITHOUT PRIOR WRITTEN PERMISSION.	东莞市川富电子有限公司 CFE CORPORATION CO.,LTD.	
ANGEL	±2°	A4			
0~6	±0.10		SHEET: 1 of 1	PART NO.	CM-BP59311-02140H0A
6~30	±0.20	DRAW		FILE NAME	BP593XX
30~150	±0.30	CHECK		TITLE	Magnetic Cable Connector
GENERAL TOLERANCE UNLESS OTHERWISE NOTED		APPRO			

ECN(DCN) NO.	A0	2016.06.18	NEW
REV	DATE	DESCRIPTION	