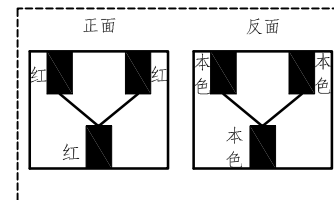
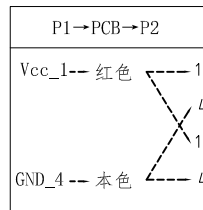
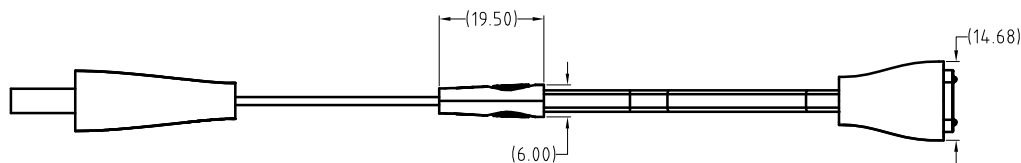
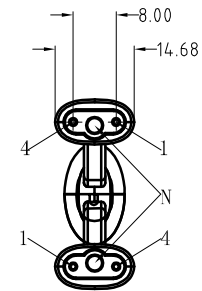
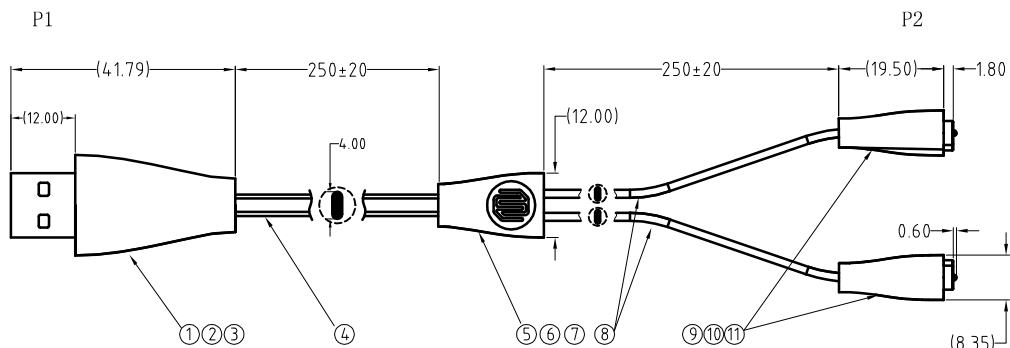
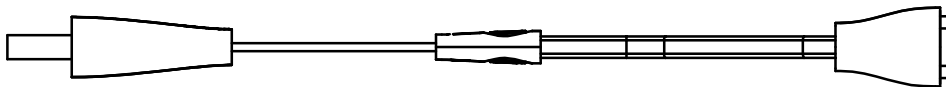
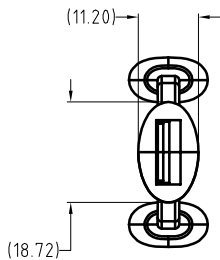


Note: (注意)
 Mechanical: (机械性能)
 .Contact force: 40g±20g at 0.6mm working stroke
 (接触弹力: 40g±20g在0.6mm的工作行程)
 .Full stroke:0.80mm
 (最大行程: 0.80mm)
 .Life test: 20,000 cycles
 (寿命: 20000次)
 Electrical: (电气性能)
 .Rated current & voltage: DC 5V, 1A
 (额定电压, 电流: DC 5V, 1A)
 .Contact resistance: 50 milliohm Max.
 (接触阻抗: 50 milliohm Max.)
 100% open & short test.
 (100%导通, 短路测试)



Approve Sign



PCB焊盘示意图

SCALE	10:1	UNIT:mm	THIS DOCUMENT IS THE SOLE PROPERTY OF CFE CORPORATION CO.,LTD., AND SHOULD NOT BE USED IN WHOLE OR IN PART WITHOUT PRIOR WRITTEN PERMISSION.	SHEET: 1 of 1	东莞市川富电子有限公司 CFE CORPORATION CO.,LTD.	
ANGEL	±2°	A4				
0~6	±0.10					
6~30	±0.20	DRAW				
30~150	±0.30	CHECK			PART NO.	CM-BP102311-02800H0A
GENERAL TOLERANCE UNLESS OTHERWISE NOTED			APPRO		FILE NAME	BP1023XX
					TITLE.	Magnetic Cable Connector

ECN(DCN) NO.	REV	DATE	DESCRIPTION
	D0	2017.04.10	NEW