

Note:<注意>

Mechanical:<机械性能>

- .Contact force: 70g±20g at 1.0mm working stroke
- <接触弹力: 70g±20g在1.0mm的工作行程>
- .Full stroke: 1.40mm
- <最大行程: 1.40mm>
- .Life test: 50,000 cycles
- <寿命: 50000次>

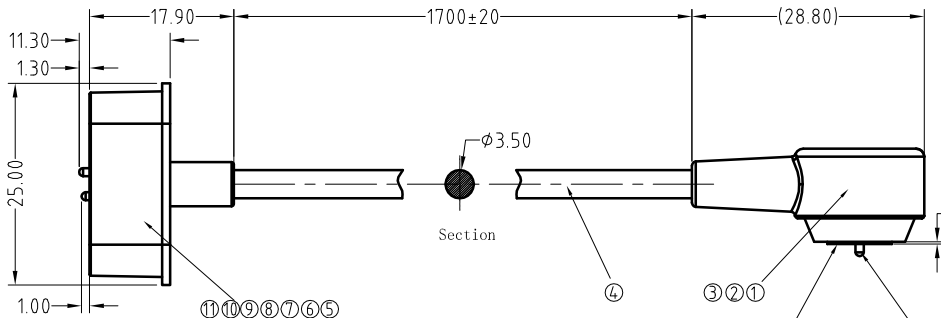
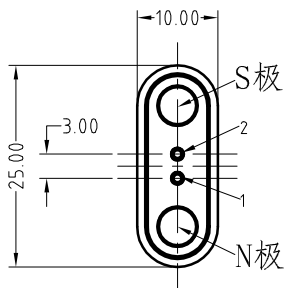
Electrical:<电气性能>

- .Rated current & voltage: DC 19V, 3A Max.
- <额定电压, 电流: DC 19V, 3A Max.>
- .Contact resistance: 50 milliohm Max.
- <接触阻抗: 50 milliohm Max.>
- 100% open & short test.
- <100%导通,短路测试>

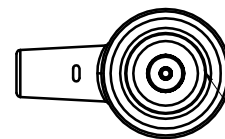
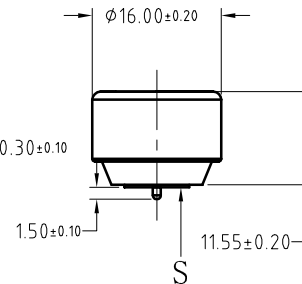


Approve Sign

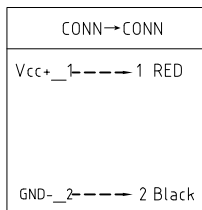
CONN



CONN



Red wire connection pin  
Black wire connection shell



10	Pogo pin plating 0.25um Au+Housing+PCB <弹簧针 电镀金0.25um 装胶芯+焊PCB>	B625-F2100	1
9	N52 NdFeB Magnet plating Ni-Cu-Ni <N52 钕铁硼磁铁 表面镀镍铜镍>	B625-M2100	1
8	N52 NdFeB Magnet plating Ni-Cu-Ni <N52 钕铁硼磁铁 表面镀镍铜镍>	B625-M1100	1
7	SR White PVC 45P 5g <SR 白色 PVC 45P 5克 >	B000-P0001	1
6	White ABS UL94 V-0 <白色 ABS UL94 V-0>	B625-H2000	1
5	White ABS UL94 V-0 <白色 ABS UL94 V-0>	B625-H1000	1
4	OD3.50 2C 22AWG White Jacket PVC 55P 1740mm <OD3.50 2C 22AWG 白色PVC外被 55P 1740mm >	X002-0103-XXXX	1
3	White PVC 45P 5g <白色 PVC 45P 5克>	B000-P0001	1
2	Lucency PE 3g <透明 PE 3克>	B000-P9001	1
1	142 Magnetic suction joint <142磁吸接头>	M-BP14211-01000H0C	1
序号 (NO.)	规格 (Specification)	料号 (P/N)	数量 (Qty)

	T0	2016.07.30	修改线材长度
	A1	2016.07.15	修改实物与图纸不符尺寸及公差
	A0	2016.06.27	NEW
ECN(DCN) NO.	REV	DATE	DESCRIPTION

SCALE	10:1	UNIT:mm	THIS DOCUMENT IS THE SOLE PROPERTY OF CFE CORPORATION CO.,LTD., AND SHOULD NOT BE USED IN WHOLE OR IN PART WITHOUT PRIOR WRITTEN PERMISSION.
ANGEL	±2°	A4	
0~6	±0.10		
6~30	±0.20	DRAW	SHEET: 1 of 1
30~150	±0.30	CHECK	
GENERAL TOLERANCE UNLESS OTHERWISE NOTED		APPRO	

**CFE** 东莞市川富电子有限公司  
CFE CORPORATION CO.,LTD.

PART NO.	CM-BP62511-02300H0A
FILE NAME	BP625XX
TITLE.	Magnetic Cable Connector