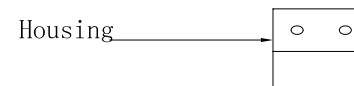
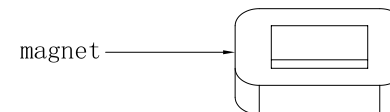
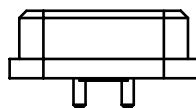
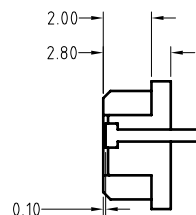
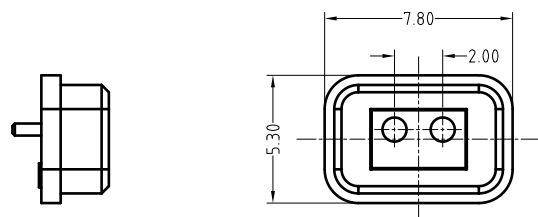
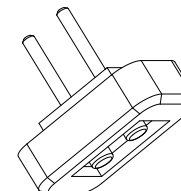


Note:<注意>  
 Mechanical:<机械性能>  
 .Contact force: 70g±20g at 1.0mm working stroke  
 <接触弹力: 70g±20g在1.0mm的工作行程>  
 .Full stroke:1.40mm  
 <最大行程: 1.40mm>  
 .Life test: 20,000 cycles  
 <寿命: 20000次>  
 Electrical: <电气性能>  
 .Rated current & voltage: DC 12V, 1A  
 <额定电压, 电流: DC 12V, 1A>  
 .Contact resistance: 50 milliohm Max.  
 <接触阻抗: 50 milliohm Max.>  
 100% open & short test.  
 <100%导通,短路测试>



Approve Sign



SCALE	10:1	UNIT:mm	THIS DOCUMENT IS THE SOLE PROPERTY OF CFE CORPORATION CO.,LTD., AND SHOULD NOT BE USED IN WHOLE OR IN PART WITHOUT PRIOR WRITTEN PERMISSION.	<b>东莞市川富电子有限公司</b> <b>CFE CORPORATION CO.,LTD.</b>	
ANGEL	±2°	A4			
0~6	±0.10		SHEET: 1 of 1		
6~30	±0.20	DRAW			PART NO. M-BP51101-02200H0A
30~150	±0.30	CHECK			FILE NAME BP511XX
GENERAL TOLERANCE UNLESS OTHERWISE NOTED		APPRO			TITLE. Pogo pin Connector

_____	D0	2014.11.20	NEW
ECN(DCN) NO.	REV	DATE	DESCRIPTION