

Note:<注意>

Electrical:<电气性能>

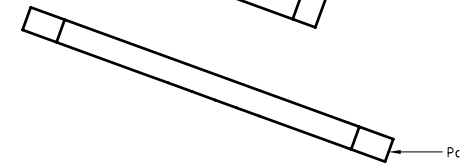
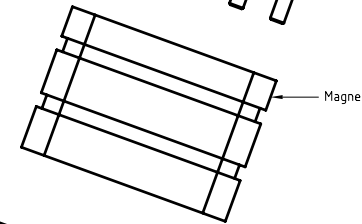
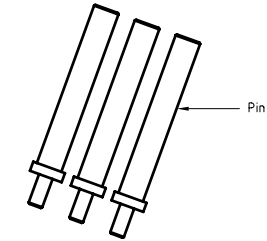
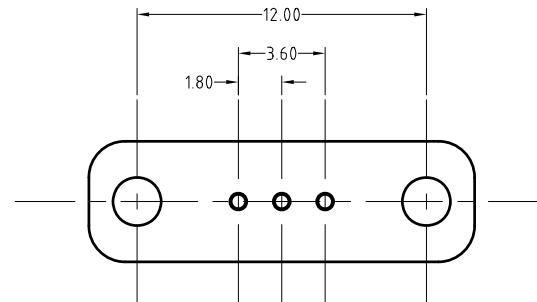
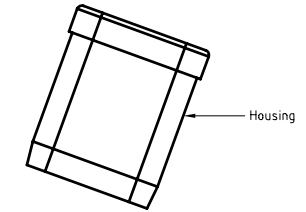
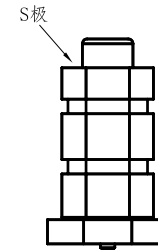
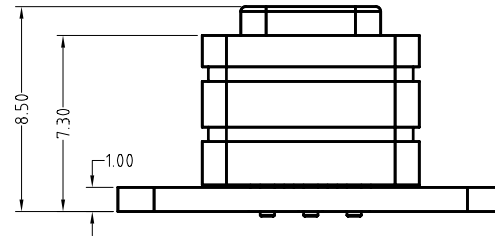
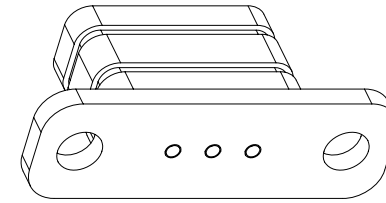
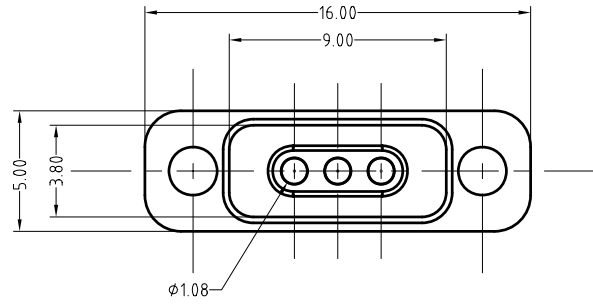
.Rated current & voltage: DC 12V, 1A Max.

<额定电压, 电流: DC 12V, 1A>

.When the current is greater than 1A then need to increase the time delay circuit(3 second)

100% open & short test.

<100%导通, 短路测试>



Approve Sign

4	PCB Polyester fiber board <PCB 聚酯纤维板>	B546-F1001	1
3	N50 NdFeB Magnet plating Ni-Cu-Ni <N50 钕铁硼磁铁 表面镀镍铜镍>	B546-M1100	1
2	Black HTN UL94 V-0 <黑色HTN UL94 V-0>	B546-H1001	1
1	Pin plating 0.25um Au <针 电镀金0.25um>	B546-W1010	3
序号 <NO.>	规格 <Specification>	料号 <P/N>	数量 <Qty>

	A2	2017.06.01	修改车件料号
	A1	2016.01.15	取消橡胶圈
	A0	2015.12.28	NEW
ECN(DCN) NO.	REV	DATE	DESCRIPTION

SCALE	10:1	UNIT:mm	THIS DOCUMENT IS THE SOLE PROPERTY OF CFE CORPORATION CO.,LTD., AND SHOULD NOT BE USED IN WHOLE OR IN PART WITHOUT PRIOR WRITTEN PERMISSION.	
ANGEL	±2°	A4	SHEET: 1 of 1	
0~6	±0.10			
6~30	±0.20	DRAW	PART NO.	M-BP54601-03180H0F
30~150	±0.30	CHECK	FILE NAME	BP546XX
GENERAL TOLERANCE UNLESS OTHERWISE NOTED	APPRO		TITLE.	Magnetic Connector

