

Note:<注意>

Electrical:<电气性能>

Rated current & voltage: DC 12V, 2A

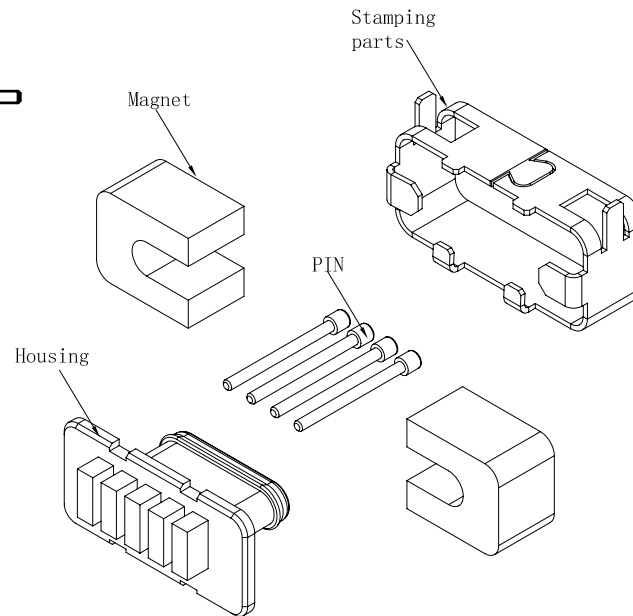
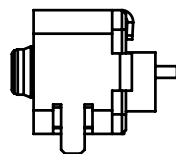
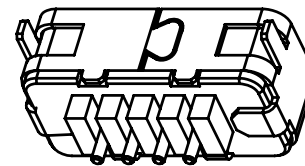
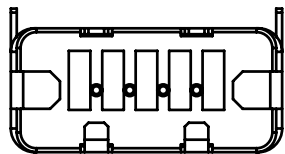
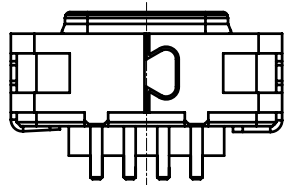
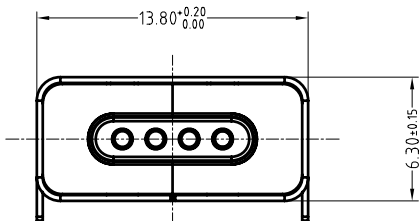
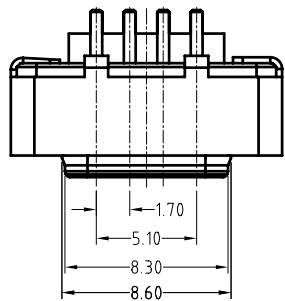
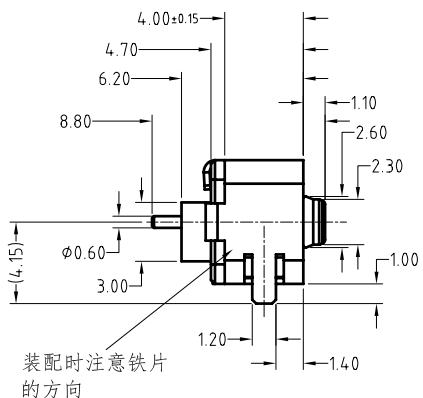
<额定电压, 电流: DC 12V, 2A>

Contact resistance: 50 milliohm Max.

<接触阻抗: 50 milliohm Max.>



Approve Sign



4	Black HTN UL94 V-0 <黑色 HTN UL94 V-0>	B291-H2100	1
3	pin plating 0.25um Au <针 电镀金0.25um>	B640-W1010	4
2	N52 NdFeB Magnet plating Ni-Cu-Ni <N52 钕铁硼磁铁 表面镀镍铜镍>	B291-M2100	2
1	SPPC Brass NI 冷轧板 表面镀镍	B291-C2100	1
序号 (NO.)	规格 (Specification)	料号 (P/N)	数量 (Qty)

SCALE	10:1	UNIT:mm	THIS DOCUMENT IS THE SOLE PROPERTY OF CFE CORPORATION CO.,LTD., AND SHOULD NOT BE USED IN WHOLE OR IN PART WITHOUT PRIOR WRITTEN PERMISSION.	东莞市川富电子有限公司 CFE CORPORATION CO.,LTD.	
ANGEL	±1°	A4			
0~6	±0.05		SHEET: 1 of 1	PART NO.	M-BP64021-04170H0B
6~30	±0.10	DRAW		FILE NAME	BP640XX
30~150	±0.15	CHECK		TITLE	Magnetic Connector
GENERAL TOLERANCE UNLESS OTHERWISE NOTED		APPRO			

ECN(DCN) NO.	REV	DATE	DESCRIPTION
	A0	2016.05.05	NEW