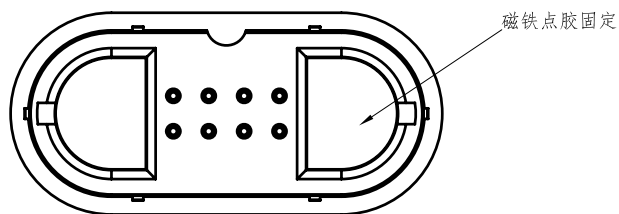
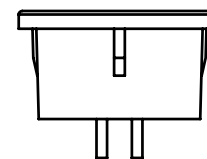
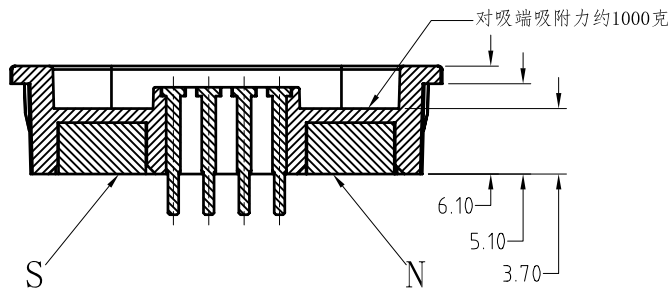
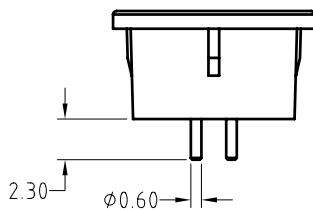
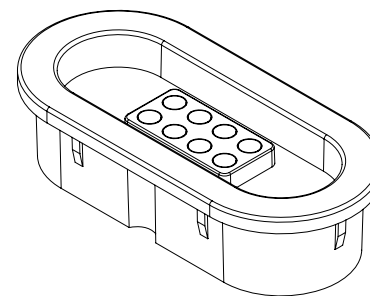
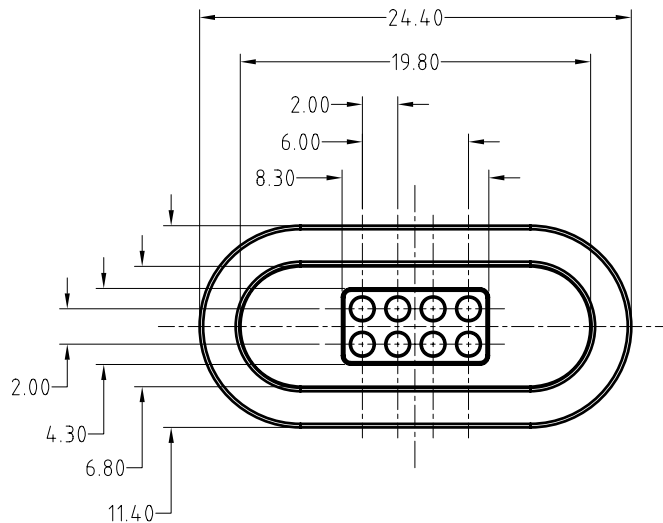


Note: <注意>
 Electrical: <电气性能>
 .Rated current & voltage: DC 12V, 1A Max.
 <额定电压, 电流: DC 12V, 1A>
 .When the current is greater than 1A then need to
 increase the time delay circuit(3 second)
 100% open & short test.
 <100%导通, 短路测试>



Approve Sign



3	pin plating 0.125um Au <针 电镀金0.125um>	B1210-W1005	8
2	N52 NdFeB Magnet plating Zn <N52 钕铁硼磁铁 表面镀锌>	0200018-2000	2
1	Black HTN UL94 V-0 <黑色 HTN UL94 V-0>	0300050-2000	1
序号 <NO.>	规格 <Specification>	料号 <P/N>	数量 <Qty>

SCALE	10:1	UNIT:mm	THIS DOCUMENT IS THE SOLE PROPERTY OF CFE CORPORATION CO.,LTD., AND SHOULD NOT BE USED IN WHOLE OR IN PART WITHOUT PRIOR WRITTEN PERMISSION.
ANGEL	±2°	A4	
0~6	±0.10		SHEET: 1 of 1
6~30	±0.20	DRAW	
30~150	±0.30	CHECK	
GENERAL TOLERANCE UNLESS OTHERWISE NOTED		APPRO	



PART NO. MFA011222-08A1A0

FILE NAME MXA0112

TITLE. Magnetic connector/磁吸连接器

ECN(DCN) NO.	REV	DATE	DESCRIPTION
	A0	2017.12.07	NEW