

Note:<注意>

Materials: <材料>

.Insulator: Black high temperature plastics UL94 V-0

<胶芯: 黑色耐高温塑料UL94 V-0>

.Pin: Brass 0.25um Au over Ni

<pin针: 黄铜, 表面镀金0.25um, 底层镀镍>

.Sheet: SUS202

<薄片: 不锈钢202>

.Magnet: N48 surface plating Ni.

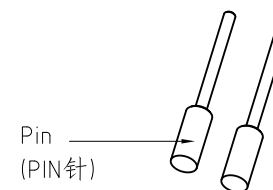
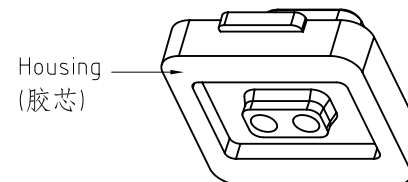
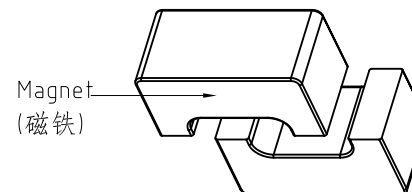
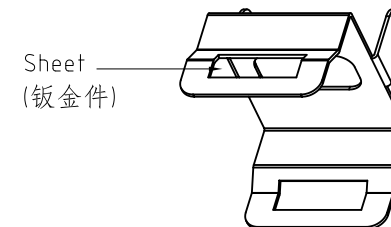
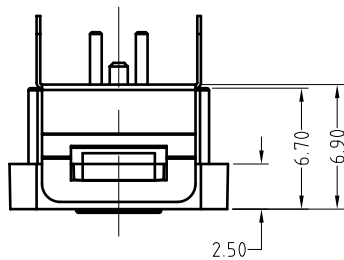
<磁铁: N48表面镀镍>

Electrical:<电气性能>

<额定电压, 电流: DC 12V, 1A>

.Contact resistance: 50 milliohm Max.

<接触阻抗: 50 milliohm 最大>

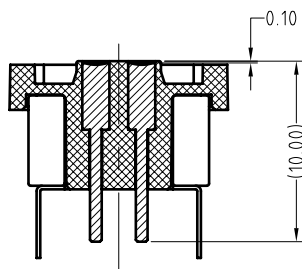
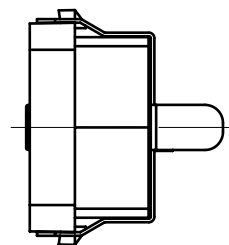
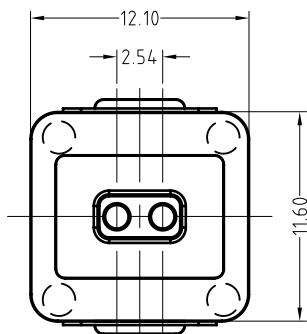
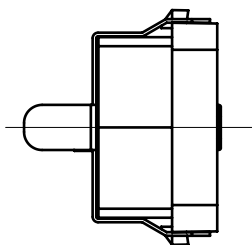


A


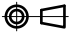
B

C

D



ECN(DCN) NO.	REV	DATE	DESCRIPTION
2014.092811	T2	2015.07.16	pin针规格尺寸改变, 塑胶增加台阶
_____	A1	2014.09.28	pin针规格尺寸改变, 取消泡棉
_____	A0	2014.08.16	NEW

SCALE	10:1	UNIT:mm	THIS DOCUMENT IS THE SOLE PROPERTY OF CFE CORPORATION CO.,LTD., AND SHOULD NOT BE USED IN WHOLE OR IN PART WITHOUT PRIOR WRITTEN PERMISSION.	 东莞市川富电子有限公司 CFE CORPORATION CO.,LTD.	
ANGEL	±1°	A4			
0~6	±0.05		SHEET: 1 of 1	PART NO.	M-BP24001-02254H0B
6~30	±0.10	DRAW		FILE NAME	BP240XX
30~150	±0.15	CHECK		TITLE	Pogo pin connector
GENERAL TOLERANCE UNLESS OTHERWISE NOTED		APPRO			