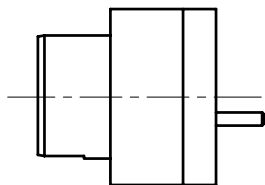
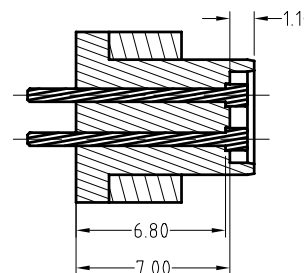
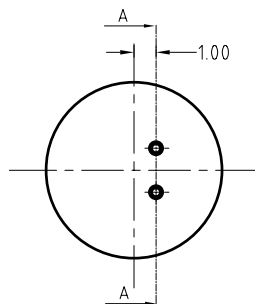
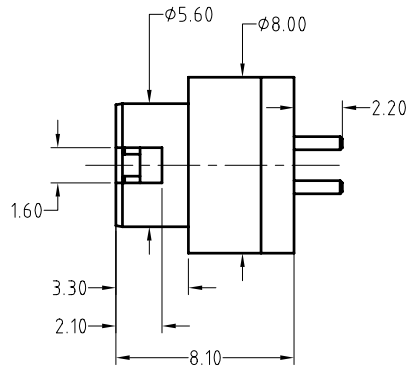
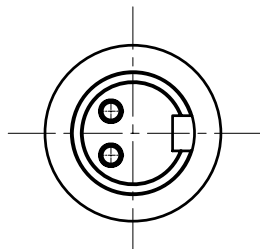


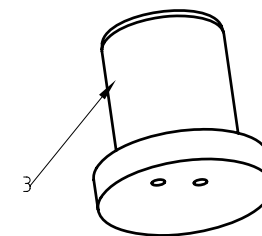
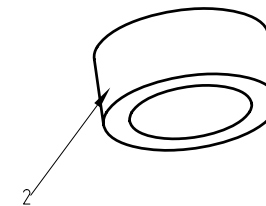
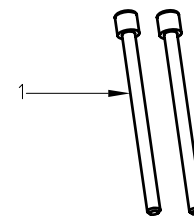
Note:<注意>
 Materials:<材质>
 Pin: Brass 0.5um Au over Ni
 <Pin: 黄铜表面镀金0.5um, 底层镀镍>
 Electrical:<电气性能>
 Rated current & voltage: DC 12V, 2A
 <额定电压, 电流: DC 12V, 2A>
 Contact resistance: 50 milliohm Max.
 <接触阻抗: 50 milliohm Max.>



Approve Sign



截面 A-A



3	N52 NdFeB Magnet plating Ni-Cu-Ni <N52 钕铁硼磁铁 表面镀镍铜镍>	B466-M1000	1
2	Black HTN UL94 V-0 黑色 HTN UL94 V-0	B466-H2000	1
1	Pin plating 0.25um Au <针 电镀金0.25um>	B466-W1010	2
序号 (NO.)	规格 (Specification)	料号 (P/N)	数量 (Qty)

_____	D2	2016.01.11	修改胶芯 pin针规格
_____	D1	2015.12.21	修改胶芯 pin针规格
_____	D0	2015.11.30	NEW
ECN(DCN) NO.	REV	DATE	DESCRIPTION

SCALE	10:1	UNIT:mm	THIS DOCUMENT IS THE SOLE PROPERTY OF CFE CORPORATION CO.,LTD., AND SHOULD NOT BE USED IN WHOLE OR IN PART WITHOUT PRIOR WRITTEN PERMISSION.	CFE 东莞市川富电子有限公司 CFE CORPORATION CO.,LTD.	
ANGEL	±1°	A4			
0~6	±0.10		SHEET: 1 of 1	PART NO.	M-BP46621-02200H0F
6~30	±0.15	DRAW		FILE NAME	BP466XX
30~150	±0.20	CHECK		TITLE.	Pogo pin connector
GENERAL TOLERANCE UNLESS OTHERWISE NOTED		APPRO			